

# Massachusetts Cultural Resource Information System

## Scanned Record Cover Page

<b>Inventory No:</b>	CON.F
<b>Historic Name:</b>	Derby Addition
<b>Common Name:</b>	
<b>Address:</b>	
<b>City/Town:</b>	Concord
<b>Village/Neighborhood:</b>	West Concord
<b>Local No:</b>	
<b>Year Constructed:</b>	
<b>Architect(s):</b>	
<b>Architectural Style(s):</b>	
<b>Use(s):</b>	Residential District
<b>Significance:</b>	Agriculture; Architecture; Community Planning
<b>Area(s):</b>	
<b>Designation(s):</b>	
<b>Building Materials(s):</b>	



The Massachusetts Historical Commission (MHC) has converted this paper record to digital format as part of ongoing projects to scan records of the Inventory of Historic Assets of the Commonwealth and National Register of Historic Places nominations for Massachusetts. Efforts are ongoing and not all inventory or National Register records related to this resource may be available in digital format at this time.

The MACRIS database and scanned files are highly dynamic; new information is added daily and both database records and related scanned files may be updated as new information is incorporated into MHC files. Users should note that there may be a considerable lag time between the receipt of new or updated records by MHC and the appearance of related information in MACRIS. Users should also note that not all source materials for the MACRIS database are made available as scanned images. Users may consult the records, files and maps available in MHC's public research area at its offices at the State Archives Building, 220 Morrissey Boulevard, Boston, open M-F, 9-5.

Users of this digital material acknowledge that they have read and understood the MACRIS Information and Disclaimer (<http://mhc-macris.net/macrisdisclaimer.htm>)

Data available via the MACRIS web interface, and associated scanned files are for information purposes only. THE ACT OF CHECKING THIS DATABASE AND ASSOCIATED SCANNED FILES DOES NOT SUBSTITUTE FOR COMPLIANCE WITH APPLICABLE LOCAL, STATE OR FEDERAL LAWS AND REGULATIONS. IF YOU ARE REPRESENTING A DEVELOPER AND/OR A PROPOSED PROJECT THAT WILL REQUIRE A PERMIT, LICENSE OR FUNDING FROM ANY STATE OR FEDERAL AGENCY YOU MUST SUBMIT A PROJECT NOTIFICATION FORM TO MHC FOR MHC'S REVIEW AND COMMENT. You can obtain a copy of a PNF through the MHC web site ([www.sec.state.ma.us/mhc](http://www.sec.state.ma.us/mhc)) under the subject heading "MHC Forms."

Commonwealth of Massachusetts  
Massachusetts Historical Commission  
220 Morrissey Boulevard, Boston, Massachusetts 02125  
[www.sec.state.ma.us/mhc](http://www.sec.state.ma.us/mhc)

This file was accessed on: Thursday, October 22, 2020 at 11:36 AM

CON. F

FORM A - AREA

Area Letter Form numbers in this Area

F	
---	--

OWN West Concord

ame of Area (if any) \_\_\_\_\_

The "Derby Addition"

resent Use largely residential

eneral Date or Period 1870's-present

eneral Condition Good

Acreege approx. 60 acres

Recorded by Anne Forbes

Organization for Concord Hist. Comm.

Date 2/1/88



89/91 + 95 Central Street

Sketch Map. Draw a general map of the area indicating properties within it. Number each property for which individual inventory forms have been completed. Label streets including route numbers, if any. Indicate north. (Attach a separate sheet if space here is not sufficient).

See attached sheet

UTM REFERENCE


USGS QUADRANGLE  
SCALE


NATIONAL REGISTER CRITERIA STATEMENT (if applicable)

**ARCHITECTURAL SIGNIFICANCE** Describe important architectural features and evaluate in terms of other areas within the community.

The wood-frame houses of the Derby Addition are as diverse in style as were the numerous small owners and speculators who built them. The three that appear to be the earliest, 1381, 1391, and 1405 Main St., were built in the late 1870's-early '80's, and are all Italianate in style. Later houses, built from ca. 1890 through the 1930's, range from vernacular gable-front buildings, (most with Queen Anne details,) through large Colonial Revival houses and several types of Four-Squares, Gambrels, and double houses. Of the streets built up in the 1890's, Derby Street is notable for its pitch-roofed, bay-windowed double houses and a small boarding house/hotel --all typical of small speculators' response to an acute housing demand. Later in the decade, rows of simple, vernacular, gable-and-ell Queen Anne houses lined the first blocks of Central and Pine St.s. As on the Concord Junction Land Co. subdivision across Main St., the Colonial Revival appeared by the late 1890's here, as well, soon becoming the predominant style, especially in the neighborhood's larger houses.

**HISTORICAL SIGNIFICANCE** Explain historical importance of area and how the area relates to the development of other areas of the community.

The "Derby Addition," an 1874 subdivision of approximately 35 acres of land belonging to Benjamin Derby, (whose farmstead was located just to the northeast on Main St. until the late 1960's,) is significant as the first major subdivision of farmland in West Concord. It appears that its owner must have anticipated the demand for housing heralded by the 1874 act of the Massachusetts legislature that authorized the building of a new State Prison, just north of Concord Junction.

Development began slowly, however. In 1888, 14 acres at the southwest section were bought by Luther Jewett for a farm, delaying development in that part of the Addition for many years. By 1889 only five houses, all on Main St., had been built on the original 109 plots. Significantly, however, at least three of the five belonged to prison officers, and more were to follow, reflecting the fact that the state-built employee residences adjoining the prison were not sufficient for the prison staff. By 1905, the Jewett plots were being developed, as well.

The most rapid period in the area's development was from the late 1890's to 1910, a time of intense real estate speculation in West Concord, as small investors, most of them local residents, including many Reformatory officers, built single and double houses, one or two at a time, to rent or sell to the employees of the Reformatory, the mill at Westvale, the Boston Harness Company and the 1906 Allen Chair Co. Along with the western section of Commonwealth Av., which was subdivided by the Concord West End Land Co. in the late '90's, the Derby Addition is the best illustration in West Concord of this type of speculative growth.

**BIBLIOGRAPHY and/or REFERENCES**

Walcott, Charles. Titles, V. 5. Unpublished manuscript.

Town directories and tax records.

Wheeler & Blaisdell. Plan of Land at Concord Junction Belonging to Benjamin Derby., 1874.

INVENTORY FORM CONTINUATION SHEET

MASSACHUSETTS HISTORICAL COMMISSION  
Office of the Secretary, Boston

Community: West Concord	Form No: F
Property Name: Derby Addition	

Indicate each item on inventory form which is being continued below.

**ARCHITECTURAL SIGNIFICANCE, cont.**

The turn of the century saw more high-style houses spreading west along the south side of Main St., some with a Queen Anne exuberance that was echoed by the Union Church, originally built in 1893, then repositioned and greatly expanded in 1909.

Through the first three decades of the 20th century, development of the Derby Addition progressed southwest from Main and Central St.s toward the Assabet River. By the 1920's, the building of the area was just about complete, with more vernacular gable-fronts, Four-Squares, Bungalows, and Gambrel cottages on the side streets and the western blocks of Central St. It ended, except for some mid-20th-century infill, with a final group of gable-fronts and Gambrels on Shirley St. in the 1930's.

**HISTORICAL SIGNIFICANCE, cont.**

By 1910, an additional 30 acres to the west of the original Derby property was opened up, and house construction on Main St., the western block of Central St., and in the Prairie/Frances St. area created the final link with Westvale, turning West Concord into one continuous village.

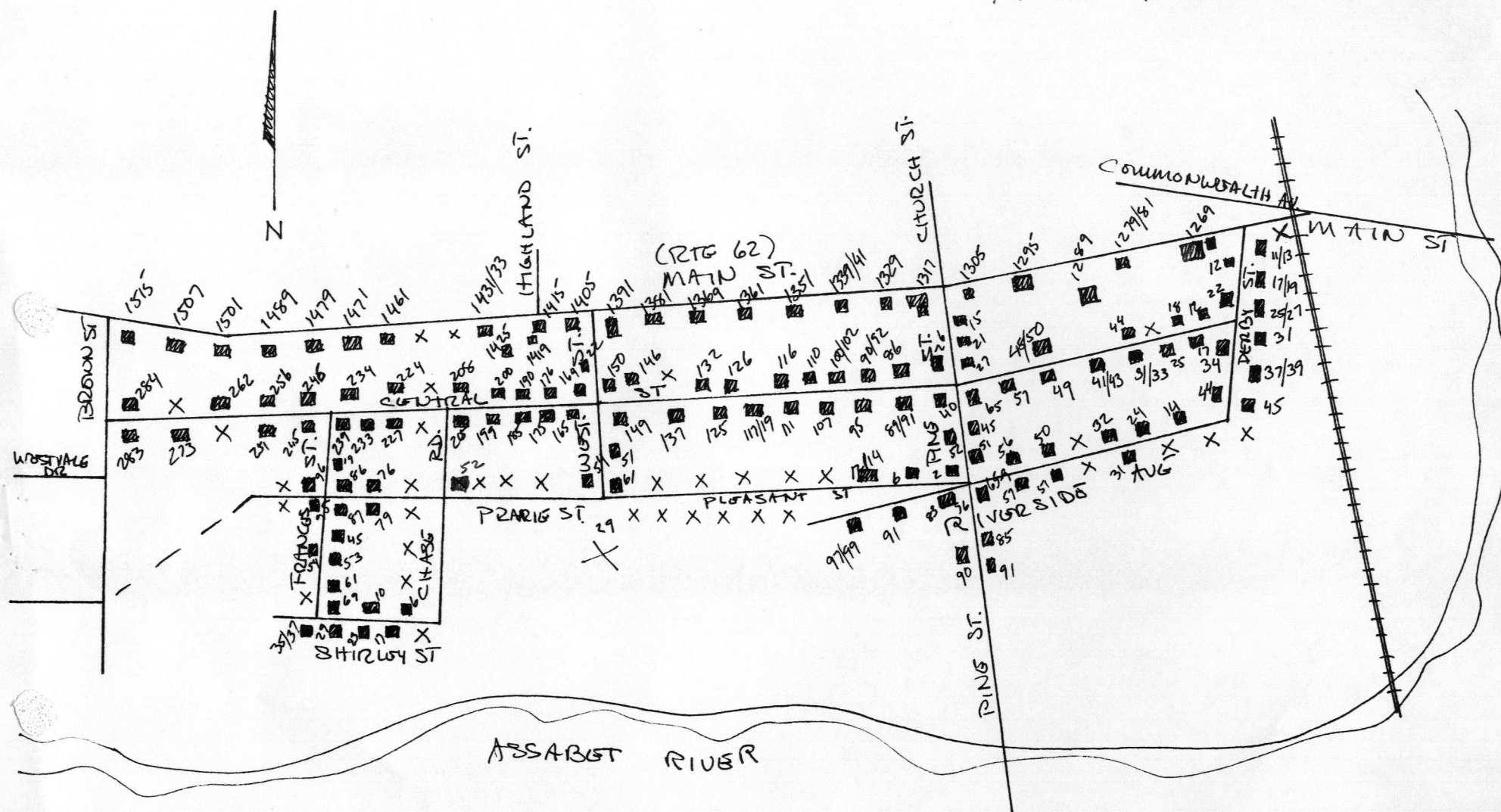
**BIBLIOGRAPHY, cont.**

Walker, George. Map of Concord Junction, Part of Concord. 1889.

The Concord Freeman, 1875.

The Concord Enterprise. 1890-1907.

ARSA F



WEST CONCORD:

the "DORBY ADDITION"

Street numbers marked with an asterisk, (\*,) indicate properties which also appear on Streetscape Forms; those with two asterisks, (\*\*,) appear on individual forms.

## MAIN STREET

## 1501 1237 Main St.--NON-CONTRIBUTING

Hamwey's of Concord. 1953 concrete block/stucco store.

## 1502 \*1269 Main St.

Ca. 1893 1-story storage shed (used by Bluine Co., 1890's); synthetic siding. 1929 2-story brick commercial block with 2-story concrete—block west addition and 1-story slate-faced east addition.

## 1503 \*1279/81 Main St.

Ca. 1880's 2 1/2-story, upright-and-wing house with wraparound, turned-columned veranda at corner. Synthetic siding.

## 1504 \*1289 Main St.

1888 2 1/2-story upright-and-wing eclectic Queen Anne house with Colonial Revival detail. Wood clapboard, with decorative shingle in gables. Built by Frank Harris. Home of Reformatory clerk, (later superintendent,) Percy Allen.

## 1505 \*1295 Main St.

Ca. 1890 2-story, pitch-roofed, late Greco-Italianate house. Entry porch with lathe-turned columns. Wood clapboard.

## 1506 \*1305 Main St.

Late 1890's 1 1/2-story, cross-gambrel Colonial Revival house. Wood shingle and clapboard. Home of Reformatory officer Benjamin Russell, and son, architect Benjamin F. W. Russell.

## \*\*1317 Main St.

Union Church. 1909 Queen Anne church; portions remaining from 1893. Wood clapboard, decorative shingle and flush board.

## 1507 \*1329 Main St.

Union Church Rectory. 1891-3 2 1/2-story cross-gable, Queen Anne vernacular house. Synthetic siding. Home of Reformatory Instructor Henry Lane.

## 1508 \*1339/41 Main St.

Ca. 1890 2 1/2-story double house; Colonial Revival/Queen Anne hybrid: pitched roof with clipped gables & decorative shingling under peaks; pedimented center entry porch with turned columns. Synthetic siding and wood shingle. Home of Reformatory instructor Thomas Ryan.

- 1509 \*1351 Main St.  
Ca. 1894 2 1/2-story, hip-roofed Colonial Revival house. Wood clapboard. Home of Reformatory officer S. Thompson Blood.
- 1510 \*1361 Main St.  
Ca. 1894 2 1/2-story, gable-and-ell house with Colonial Revival corner piazza; balcony above. Wood shingle and clapboard.
- 1511 \*1369 Main St.  
Early 1890's 2 1/2-story, vernacular gable-front house. Vestibule with Tuscan columns. Synthetic siding.
- 1512 \*1381 Main St.  
Elias H. Colburn house. Late 1870's-early 1880's Italianate; hipped-roof; Tuscan-pilastered corners, incised scroll brackets at eaves. 1-story ell with entry, e. side; Colonial Revival wrap-around corner entry porch with paired Tuscan 3/4-height columns on solid base. Core house companion to #1405. Synthetic siding.
- 1513 \*1391 Main St. 9 WEST ST  
Reformatory officer William H. Wood house. Ca. 1884 2 1/2-story, pitch-roofed Italianate house with entries on west side. Veranda with square, chamfered posts. Wood shingle.
- 1514 \*1405 Main St.  
Ca. 1880 Italianate, with hipped slate roof; core house massing identical to #1391; bracketed corner entry porch. Wood clapboard. House of Reformatory officer Josiah H. Chase in 1880's.
- 1515 \*1415 Main St.  
Ca. 1916 2-story, hip-roofed Colonial Revival house with pedimented vestibule. Synthetic siding.
- 1516 \*1419 Main St.  
Ca. 1916 converted hip-roofed garage at rear of #1415 Main. Synthetic siding.
- 1517 \*1425 Main St.  
Ca. 1940's 2-story, pyramid-roofed house. Clapboard.
- 1518 \*1431/33 Main St.  
Ca. 1890's 2 1/2-story, gable-front "free-classic" Queen Anne house. Pedimented gables; turned columns and brackets at pedimented, wrap-around veranda. Synthetic siding. Home of Reformatory instructor James Dunlop.
- 1519 1443 Main St.--NON-CONTRIBUTING  
Mid-20th century Cape Cod house.
- 1520 1453 Main St.--NON-CONTRIBUTING  
Mid 20th-century Cape Cod house.

- 1521 \*1461 Main St.  
Ca. 1906-09 2 1/2-story "free-classic" Queen Anne house; wraparound porch with Tuscan columns. Wood clapboard. Largely rebuilt, 1988.
- 1522 \*1471 Main St.  
Ca. 1906-8 gambrel-roofed Colonial Revival/Shingle Style house with porte-cochere. Wood shingle.
- 1523 \*1479 Main St.  
Ca. 1900 Four-Square with shallow, full-height north wing. Colonial Revival porch detail; undercut northwest corner; wraparound veranda. Wood clapboard.
- 1524 \*1489 Main St.  
Ca. 1900-05 1 1/2-story Queen Anne/Colonial Revival hybrid house. Wood clapboard and shingle; slate roof. Home of James Dunlop, Jr., superintendent of textile dept., Concord Mills.
- 1525 \*1501 Main St.  
Ca. 1906-8 2-story "Dutch Colonial" house. Wide wood clapboard.
- 1526 \*1507 Main St.  
Ca. 1910-15 2 1/2-story Colonial Revival, pitch-roofed house with flared skirt at 2nd story. Asbestos siding.
- 1527 \*1515 Main St.  
Ca. 1915 Four-Square with Colonial Revival veranda. Synthetic siding.

## DERBY STREET

- 1528 \*11-13 Derby St.  
Early 1890's 2 1/2-story, pitch-roofed vernacular double house; central entry porch with lathe-turned columns. Companion to #s 25/27 and 37/39 Derby St. Asbestos siding. Residence of Rederick Brigham, farmer, and Noble Loomer, Boston Harness Co., 1905/6.
- 1529 12 Derby St  
Ca. 1906-8 2 1/2-story "jerkin-head"-roofed house. Asbestos siding.
- 1530 \*17-19 Derby St.  
The Maple Hotel. Early 1890's 2 1/2-story vernacular boarding house/hotel; hip-roof with dormers; facade veranda with square posts and solid balustrade. Burned and rebuilt, 1904. Wood clapboard.
- 1531 22 Derby St.  
Ca. 1890 2 1/2-story gable-front house; vernacular Victorian. Wood clapboard. By 1894, owned by Fitchburg Railroad employee James Howard.

## 1532 \*25-27 Derby St.

Early 1890's double house. See description for #11/13 Derby st.  
Central porch with recent square posts. Home of postmaster, store-owner  
and real estate entrepreneur Loring Fowler. Wood clapboard.

## 1533 \*31 Derby St.

Ca. 1900-05 2-story gambrel. Wood clapboard.

## 1534 34 Derby St.

Mid-1890's vernacular 1 1/2-story, gable-front cottage; diagonal  
braces at entry door hood. Synthetic siding.

## 1535 \*37-39 Derby St.

Early 1890's double house. (See description for #11/13 Derby St.)  
Later square posts at porch. Wood shingle.

## 1536 44 Derby St.

Ca. 1905 1 1/2-story cross-gambrel, pedimented-gable-front house;  
Enclosed Federal-Revival corner porch. Asbestos siding.

## 1537 \*45 Derby St.

Ca. 1900 2 1/2-story, vernacular gable-front house. Wood clapboard.

## 1538 51 Derby St.--NON-CONTRIBUTING

Mid-20th century gambrel house.

## CENTRAL ST.

## 1539 \*12 Central St.

Ca. 1905 2 1/2-story, gable-front vernacular house with  
wraparound Colonial Revival veranda. Wood shingle.

## 1540 \*17 Central St

Ca. 1899 2 1/2-story, gable-and-ell Queen Anne house; decorative  
shingle in gables. Companion to 31 and 65 Central St. Wood clapboard  
and shingle.

## 1541 \*18 Central St.

1890-1900 2 1/2-story, gable-front, upright-and-wing vernacular  
house. Asbestos siding.

## 1542 \*25 Central St.

First of four identical 2 1/2-story square, gable-front  
vernacular houses, each built ca. 1899 with a central stove chimney,  
slightly asymmetrical fenestration on the facade, and a veranda that  
wraps around to meet a one-story kitchen ell. Asbestos shingle.

## 1543 28 Central St.--NON-CONTRIBUTING

Mid-20th century Cape Cod house.

- 1514 \*31/33 Central St.  
Ca. 1899. A mirror-image of #17; see description, above. Wrap-around veranda with lathe-turned columns, brackets, and "Japanesque" balustrade. Home of Commonwealth Av. grocer Charles Waite. Synthetic siding.
- 1515 \*41-43 Central St.  
See description for #25 Central St. Wrap-around veranda with turned columns, scroll-cut diagonal braces, and "Japanesque" balustrade. Wood clapboard, with shingle banding on side.
- 1516 \*44 Central St.  
Ca. 1899 1 1/2-story upright-and-wing house with enclosed wrap-around veranda. Wood shingle.
- 1517 \*49 Central St.  
See description, #25 Central St. Wood shingle. Home of plumber George Keith.
- 1518 \*48-50 Central St.  
1910-18 2 1/2-story double house, turned 90 degrees to the street, with an entrance ell on each side. Wood clapboard.
- 1519 \*57 Central St.  
See description for #25 Central St. Square half-columns and solid balustrade on veranda. Wood shingle. Home of Boston Harness Co. employee Randall Woodworth.
- 1550 \*65 Central St.  
Ca. 1899, identical in plan to #17 and 31/33 Central; (see description for #17). Asbestos shingle.
- 1551 \*86 Central St.  
Ca. 1910 Four-Square with enclosed porch. Synthetic siding.
- ~~\*\*89/91~~ Central St.  
Ca. 1900 large 2 1/2-story, gable-front vernacular Queen Anne house with shallow 2-story wing; wrap-around veranda with turned columns, saw-cut brackets and "Japanesque" balustrade. Wood clapboard, with shingled gables.
- 1552 \*90/92 Central St.  
Ca. 1901-1905 2 1/2-story cross-Gambrel "two-decker" house; enclosed porch. Wood clapboard with shingled gables.
- 1553 \*95 Central St.  
Ca. 1906-09 2-story Four-Square with full-height facade ell. Wrap-around veranda with Colonial Revival detail. Asbestos siding.
- 1554 \*100-102 Central St.  
Ca. 1901-05 2-1/2-story upright-and-wing 2-family house. Late Queen Anne; turned columns on wrap-around veranda; decorative shingle in pediment of second-story balcony. Wood clapboard.

- 1555 \*107 Central St.  
Ca. 1920's 1 1/2-story "Dutch Colonial" house. Wood clapboard.
- 1556 \*110 Central St.  
Ca. 1905 square, hip-roofed house with full-height, pedimented side ell. Porch at cut-out facade corner with 2/3-height Tuscan columns on pedestals. Wood clapboard. Home of Reformatory officer John Allen.
- 1557 \*111 Central St.  
Ca. 1910 pitch-roofed, gable-front "two-decker"; 2-story facade bay, and 2-story porch, (with turned columns until 6/88.) Synthetic siding.
- 1558 \*116 Central St.  
Ca. 1910-17 1 1/2-story cross-gambrel house; Colonial Revival detail on enclosed corner porch & rear side entry. Wood shingle.
- 1559 \*117-119 Central St.  
Ca. 1903 2-story, hip-roofed, Colonial Revival double house; veranda with 2/3-height Tuscan columns on chamfered pedestals. Synthetic siding. Home of Reformatory officer Alberto Payson and Thomas Shaughnessy, inspector, Custom House, Boston.
- 1560 \*125 Central St.  
Early 1920's Four-Square; enclosed porch. Wood clapboard and shingle.
- 1561 \*126 Central St.  
Ca. 1912 Four-Square with enclosed porch. Wood clapboard.
- 1562 \*132 Central St.  
Ca. 1912 2 1/2-story gable-front vernacular house; enclosed porch. Wood clapboard.
- 1563 \*137 Central St.  
Early 1920's 1 1/2-story gable-front vernacular house. Wood shingle, with stuccoed 2nd story.
- 1564 140 Central St.--NON-CONTRIBUTING  
20th-century 2-story house.
- 1565 \*146 Central St.  
Ca. 1900 1 1/2-story, upright-and-wing, late Queen Anne house. Bracketed, turned-columned veranda on ell; enclosed porch on facade. Wood clapboard and decorative shingle.
- 1566 \*149 Central St.  
Ca. 1906-09 Colonial Revival Four-Square with full-height facade ell. Veranda has slender Tuscan columns with pronounced entasis. Asbestos shingle.
- 1567 \*150 Central St.  
Ca. 1900 2-story gable-front house with cut-out facade corner; 1 1/2-story facade addition. Synthetic siding. Home of H.P. Upham, superintendent of ~~A~~ en Chair Co.

- 1568 164 Central St.  
Early 1920's Four-Square. Wood clapboard and shingle.
- 1569 165 Central St.  
Ca. 1907-10 2 1/2-story, pitched-roof Colonial Revival house with pedimented gables. Asbestos siding.
- 1570 175 Central St.  
Ca. 1910 1 1/2-story, hip-roofed bungalow with shallow-pedimented cross-gables. Wood shingle.
- 1571 176 Central St.  
Ca. 1930's 1 1/2-story, gambrel-roofed "Dutch Colonial" cottage. Wood shingle.
- \*\*185 Central St.  
Ca. 1915 Prairie Style 2-story, hip-roofed stucco house.
- 1572 190 Central St.  
Ca. 1915 Four-Square. Wood shingle.
- 1573 199 Central St.  
Ca. 1915 2-story cross-gambrel house. Synthetic siding.
- 1574 200 Central St.  
Ca. 1915 2 1/2-story, upright-and-wing house; wrap-around entry porch with lathe-turned columns. Asbestos siding, with wood-shingled gables.
- 1575 205 Central St.  
Ca. 1915 2 1/2-story gable-front house with Colonial Revival veranda. Synthetic siding.
- 1576 208 Central St.  
Ca. 1915 2 1/2-story, upright-and-wing house. Wraparound porch with lathe-turned columns. Asbestos siding, with wood-shingled gables.
- 1577 217 Central St.--NON-CONTRIBUTING  
1-story early 1950's house.
- 1578 218 Central St.--NON-CONTRIBUTING  
Mid-20th century Cape Cod house.
- 1579 224 Central St.  
1920's Four-Square with enclosed porch. Wood clapboard and shingle.
- 1580 227 Central St.  
Ca. 1915 2-story cross-gambrel cottage. Wood shingle and clapboard.
- 1581 233 Central St.  
Ca. 1915 1 1/2-story, upright-and-wing cottage with bracketed, turned-column porch. Wood clapboard, with shingled gable.

- 1582 234 Central St.  
Ca. 1910-15 large 2 1/2-story upright-and-wing house; wrap-around porch with lathe-turned columns and brackets. Wood clapboard.
- 1583 239 Central St.  
Ca. 1910-15 1 1/2-story Gambrel; veranda with square, half-height columns and solid balustrade. Wood clapboard, with shingled upper story.
- 1584 245 Central St.  
Ca. 1910-15 Four-Square. Synthetic siding.
- 1585 246 Central St.  
Ca. 1910-15 Four-Square; wrap-around Colonial Revival veranda.. Synthetic siding.
- 1586 251 Central St.  
Ca. 1919-27 Four-Square; Synthetic siding.
- 1587 256 Central St.  
Ca. 1910-15 pedimented gable-front house. Synthetic siding, with wood-shingled gable.
- 1588 261 CENTRAL St.--NON-CONTRIBUTING  
Mid-20th century ranch house.
- 1589 262 Central St.  
Ca. 1910 1 1/2-story gable-and-ell cottage; wrap-around veranda with saw-cut brackets. Synthetic siding.
- 1590 272 Central St.--NON-CONTRIBUTING  
Mid-20th century Cape Cod house.
- 1591 273 Central St.  
1920's 2-story, pitch-roofed Colonial Revival house; pedimented vestibule and 1-story wing. Wood clapboard.
- 1592 283 Central St.  
Ca. 1920 Craftsman-like cottage with entry recessed under roof. Wood clapboard.
- 1593 284 Central St.  
Ca. 1940 stucco and shingle Four-Square; Colonial Revival entry porch.

## RIVERSIDE AVENUE

- 1594 3 Riverside Av.--NON-CONTRIBUTING  
Mid-20th century Cape Cod house.
- 1595 11 Riverside Av.--NON-CONTRIBUTING  
Mid-20th century Cape Cod house.

- 1596 14 Riverside Av.  
1920's 1 1/2-story Gambrel cottage. Synthetic siding.
- 1597 24 Riverside Av.  
Ca. early 1930's 2-story, pitched-roof, vernacular house. Synthetic siding.
- 1598 31 Riverside Av.  
Ca. 1930's 2-story vernacular house with 1-story ell; gable-front, flared skirt at 2nd story level. Wood shingle.
- 1599 32 Riverside Av.  
1930's 2-story gable-front vernacular house; paired square columns at entry porch. Wood clapboard and shingle.
- 1600 39 Riverside Av.--NON-CONTRIBUTING  
Mid-20th century Cape Cod house.
- 1601 42 Riverside Av.--NON-CONTRIBUTING  
Mid-20th century 2-story brick and wood house.
- 1602 50 Riverside Av.  
Ca. 1910-15 2 1/2-story, upright-and-wing house with 1 1/2-story ell. Synthetic siding.
- 1603 51 Riverside Av.  
Ca. 1910-15 2 1/2-story upright-and-wing house with Colonial Revival veranda. Wood clapboard.
- 1604 56 Riverside Av.  
Ca. 1910-15; see description for #51 Riverside. Synthetic siding.
- 1605 57 Riverside Av.  
Ca. 1930 1 1/2-story Bungalow; integral veranda with 1/2-height, square columns and solid balustrade; pedimented dormer on facade. Wood clapboard.
- 1606 65-69 Riverside Av.; 73 Pine St.  
Ca. 1900 2 1/2-story Colonial Revival, gable-front double house with twin 1-story facade and 2-story side bays. Synthetic siding.
- ~~\*\*83~~ 83 Riverside Av.; 76 Pine St.  
Late 1890's 2 1/2-story high-style Queen Anne house. Wood clapboard, flush board, and decorative shingle. George Conant house; rented by managers of the American Woolen Co. at Westvale.
- 1607 91 Riverside Av.  
Ca. 1938-1940 2-story, vernacular gable-front house. Synthetic siding.
- 1608 97/99 Riverside Av.  
Ca. 1900-05 2-story, pitched-roof vernacular double house. Synthetic siding.

## PINE STREET

- 1609 \*15 Pine St.  
First in a row of three identical early 1890's 1 1/2-story pitch-roofed, gable-front vernacular cottages with 1-story rear ells. Asbestos and wood shingle.
- 1610 \*21 Pine St.  
See description, #15 Pine St. Wood clapboard and shingle.
- 1611 26 Pine St  
1890's 2 1/2-story upright-and-wing house; wrap-around veranda with lathe-turned columns and jig-saw-cut brackets. Synthetic siding.
- 1612 \*27 Pine St.  
See description for #15 Pine St. Wood clapboard.
- 1613 40 Pine St.  
Late 1890's 2 1/2-story upright-and-wing house. Enclosed vestibule. Synthetic siding.
- 1614 \*45 Pine St.  
See description for #25 Central St. Veranda with lathe-turned columns and saw-cut brackets. Asphalt and clapboard.
- 1615 \*51 Pine St  
See description for #45, above. Wood clapboard, with decorative shingle banding in gable.
- 1616 52 Pine St.  
Late 1890's 2 1/2-story, gable-front vernacular house with Colonial Revival porch. Clapboard and shingle.
- 1617 85 Pine St.  
Ca. 1938-40 2-story gable-front vernacular house; Colonial Revival entry porch with paired Tuscan columns. Wood clapboard.
- 1618 90 Pine St.  
Ca. 1910 2-story gable-and-ell vernacular house. Wood clapboard.
- 1619 91 Pine St.  
See description for #85 Pine St. Wood shingle.

## PLEASANT STREET

- 1620 2 Pleasant St.  
Ca. 1900-05 2-story gable-front vernacular house. Wood clapboard and synthetic siding. Home of Allen Osborne, Superintendent of Strathmore Woolen Co. in 1909.
- 1621 6 Pleasant St.  
1900-1905 2-story, gable-front vernacular house. Synthetic siding.

- 1622 12/14 Pleasant St.  
1900-1905 2-story, hip-roofed house with double-gabled facade. Wood clapboard and synthetic siding.
- 1623 22 Pleasant St.--NON-CONTRIBUTING  
Mid-20th century Cape Cod house.
- 1624 32 Pleasant St.--NON-CONTRIBUTING  
Ca. 1930's 1 1/2-story Cape Cod house with casement windows. Synthetic siding.
- 1625 35 Pleasant St.--NON-CONTRIBUTING  
Mid-20th century Cape Cod house.
- 1626 42 Pleasant St.--NON-CONTRIBUTING  
See description for #35 Pleasant.
- 1627 45 Pleasant St.--NON-CONTRIBUTING  
See description for #35 Pleasant.
- 1628 53 Pleasant st.--NON-CONTRIBUTING  
See description for #35 Pleasant.
- 1629 54 Pleasant St.--NON-CONTRIBUTING  
Mid-20th century ranch house.
- 1630 63 Pleasant St.--NON-CONTRIBUTING  
Ca. 1940 hip-roofed Colonial Revival house.
- 1631 64 Pleasant St.--NON-CONTRIBUTING  
Ca. 1940 2-story house.
- 1632 69 Pleasant St.--NON-CONTRIBUTING  
Mid-20th century 2-story brick house.
- 1633 75 Pleasant St.--NON-CONTRIBUTING  
Mid-20th century gambrel house.

## WEST STREET

- 1634 22 West St.  
Ca. 1920 2 1/2-story, pitched-roof vernacular house. Synthetic siding.
- 1635 51 West St.  
Ca. 1920's Four-Square. Synthetic siding.
- 1636 54 West St.  
Ca. 1920's 1 1/2-story Gambrel house. Wood shakes.
- 1637 61 West St.  
Ca. 1938-40 2-story upright-and-wing house with Federal Revival details. Wood clapboard.

PRAIRIE STREET

- 1638 20 Prairie St.--NON-CONTRIBUTING  
Mid-20th century house.
- 1639 29 Prairie St.--NON-CONTRIBUTING  
Mid-20th century elementary school.
- 1640 34 Prairie St.--NON-CONTRIBUTING  
Late 20th century "Garrison Colonial" house.
- 1641 44 Prairie St.--NON-CONTRIBUTING  
Late 20th-century "Garrison Colonial" house.
- 1642 52 Prairie St.--~~NON-CONTRIBUTING~~ John + Elsie Kennedy House  
Mid-20th century Cape Cod house. Designed by Royal Barry Wills.  
1926-27
- 1643 53 Prairie St.--NON-CONTRIBUTING  
Mid-20th century 2-story house.
- 1644 64 Prairie St.--NON-CONTRIBUTING  
1930's Gambrel-roofed house.
- 1645 67 Prairie St.--NON-CONTRIBUTING  
Late 20th-century "Garrison Colonial" house.
- 1646 \*76 Prairie St.  
1906-08 2 1/2-story, gable-front vernacular Queen Anne house.  
Wrap-around veranda with lathe-turned columns and jig-saw-cut brackets.  
Wood clapboard and decorative shingle.
- 1647 \*79 Prairie St.  
Ca. 1906-08 1 1/2-story gambrel cottage. Companion to #s 87 and 95  
Prairie. Wood clapboard.
- 1648 \*86 Prairie St.  
Ca. 1906-08 2 1/2-story gable-front cottage with roof extended over  
1-story side ell; core house companion to #76. Asbestos siding.
- 1649 \*87 Prairie St.  
Ca. 1906-08 1 1/2-story gambrel cottage with turned-columned and  
bracketed facade veranda. Companion to # 79 and 95 Prairie. Wood  
clapboard.
- 1650 \*95 Prairie St.  
Ca. 1906-08 1 1/2-story gambrel cottage. Companion to #79 and 87  
Prairie St. Facade veranda with lathe-turned columns. Clapboard.

- 1651 \*96 Prairie St.  
Ca. 1906-08 Four-Square; corner porch with Colonial Revival detail.  
Asbestos shingle.
- 1652 102 Prairie St.--NON-CONTRIBUTING  
Mid-20th century Cape Cod house.
- 1653 105 Prairie St.--NON-CONTRIBUTING  
Mid-20th century ranch house.

## FRANCES STREET

- 1654 19 Frances St.  
Ca. 1920's 1 1/2-story stucco and shingled hip-roofed house.
- 1655 45 Frances St.  
1920's Four-Square. Wood shakes.
- 1656 53 Frances St.  
1920's; see description for #45 Frances. Synthetic siding.
- 1657 54 Frances St.  
Ca. 1915-20 2-story gambrel with two side entries. Wood shingle.
- 1658 61 Frances St.  
1920's Four-Square. Wood shingle.
- 1659 64 Frances St.--NON-CONTRIBUTING  
Mid-20th century Cape Cod house.
- 1660 69 Frances St.  
1920's 2 1/2-story, pedimented gable-front Colonial Revival house  
with pedimented 2-story bay on facade. Asbestos and asphalt shingle.

## CHASE ROAD

- 1661 48 Chase Rd.--NON-CONTRIBUTING  
Late 20th century ranch house.
- 1662 60 Chase Rd.--NON-CONTRIBUTING  
Mid-20th century Cape Cod house.

## SHIRLEY STREET

- 1663 6 Shirley St.  
Ca. 1930's 2-story, pitch-roofed vernacular house. Synthetic siding.
- 1664 9 Shirley St.--NON-CONTRIBUTING  
Late 20th-century "Garrison Colonial house.
- 1665 10 Shirley St.  
Ca. 1930's 2 1/2-story, gable-front vernacular house. Clapboard.
- 1666 17 Shirley St.  
Ca. 1930's 2-story, gable-and-ell house.
- 1667 23 Shirley St.  
Ca. 1930's 1 1/2-story cross-gambrel house. Wood clapboard.
- 1668 29 Shirley St.  
Ca. 1930's 1 1/2-story gambrel house. Asbestos siding.
- 1669 35/37 Shirley St.  
Ca. 1930's 1 1/2-story cross-gable house with Colonial Revival veranda. Imitation brick.

AREA [F]  
 PL - WEST CONCORD  
 US6 S - MAYNARD  
 SECTION - A

1501 - 1237 MAIN ST

1502 - 1269 MAIN ST

1503 - 1279-1281 " " (ALSO DD)

1504 - 1289 " " (ALSO DD)

1505 - 1295 " " (ALSO DD)

1506 - 1305 " " (ALSO DD)

1507 - 1329 " " (ALSO DD)

1508 - 1339-1341 " " (ALSO DD)

1509 - 1351 " " (ALSO DD)

1510 - 1361 " " (ALSO DD)

1511 - 1369 " " (ALSO DD)

1512 - 1381 " " (ALSO DD)

1513 - ~~1391~~ <sup>WEST ST</sup> " " (ALSO DD)

1514 - 1405 " " (ALSO DD)

1515 - 1415 " " (ALSO DE)

1516 - 1419 " " (ALSO DE)

1517 - 1425 " " (ALSO DE)

1518 - 1431-1433 MAIN ST (ALSO DE)

1519 - 1443 " " (ALSO DE)

1520 - 1453 " " (ALSO DE)

1521 - 1461 " " (ALSO DE)

1522 - 1471 " " (ALSO DE)

1523 - 1479 " " (ALSO DE)

1524 - 1489 " " (ALSO DE)

1525 - 1501 " " (ALSO DE)

1526 - 1507 " " (ALSO DE)

1527 - 1515 " " (ALSO DE)

1528 - 11-13 DERBY ST (ALSO DF)

1529 - 12 " " (ALSO DF)

1530 - 17-19 " " (ALSO DF)

1531 - 22 " " (ALSO DF)

1532 - 25-27 " " (ALSO DF)

1533 - 31 " " (ALSO DF)

1534 - 34 " " (ALSO DF)

1535 - 37-39 " " (ALSO DF)

1536 - 44	DERBY ST	(ALSO DF)
1537 - 45	" "	(ALSO DF)
1538 - 51	" "	
1539 - 12	CENTRAL ST	(ALSO DG)
1540 - 17	" "	(ALSO DG)
1541 - 18	" "	(ALSO DG)
1542 - 25	" "	(ALSO DG)
1543 - 28	" "	(ALSO DG)
1544 - 31-33	" "	(ALSO DG)
1545 - 41-43	" "	(ALSO DG)
1546 - 44	" "	(ALSO DG)
1547 - 49	" "	(ALSO DG)
1548 - 48-50	" "	(ALSO DG)
1549 - 57	" "	(ALSO DG)
1550 - 65	" "	(ALSO DG)
1551 - 86	" "	(ALSO DH)
1552 - 90-92	" "	(ALSO DH)
1553 - 95	" "	(ALSO DH)

1554 - 100-102	CENTRAL ST	(ALSO DH)
1555 - 107	" "	(ALSO DH)
1556 - 110	" "	(ALSO DH)
1557 - 111	" "	(ALSO DH)
1558 - 116	" "	(ALSO DH)
1559 - 117-119	" "	(ALSO DH)
1560 - 125	" "	(ALSO DH)
1561 - 126	" "	(ALSO DH)
1562 - 132	" "	(ALSO DH)
1563 - 137	" "	(ALSO DH)
1564 - 140	" "	(ALSO DH)
1565 - 146	" "	(ALSO DH)
1566 - 149	" "	(ALSO DH)
1567 - 150	" "	(ALSO DH)
1568 - 164	" "	
1569 - 165	" "	
1570 - 175	" "	
1571 - 176	" "	

1572 - 190 CENTRAL ST

1573 - 199 " "

1574 - 200 " "

1575 - 205 " "

1576 - 208 " "

1577 - 217 " "

1578 - 218 " "

1579 - 224 " "

1580 - 227 " "

1581 - 233 " "

1582 - 234 " "

1583 - 239 " "

1584 - 245 " "

1585 - 246 " "

1586 - 251 " "

1587 - 256 " "

1588 - 261 " "

1589 - 262 " "

1590 - 272 CENTRAL ST

1591 - 273 " "

1592 - 283 " "

1593 - 284 " "

1594 - 3 RIVERSIDE AVE

1595 - 11 " "

1596 - 14 " "

1597 - 24 " "

1598 - 31 " "

1599 - 32 " "

1600 - 39 " "

1601 - 42 " "

1602 - 50 " "

1603 - 51 " "

1604 - 56 " "

1605 - 57 " "

1606 - 65-69 " "

1607 - 91 " "

1608 - 97-99 RIVERSIDE AVE

1609 - 15 PINE ST (ALSO DJ)

1610 - 21 PINE ST (ALSO DJ)

1611 - 26 " " (ALSO DJ)

1612 - 27 " " (ALSO DJ)

1613 - 40 " "

1614 - 45 " " (ALSO DG)

1615 - 51 " " (ALSO DG)

1616 - 52 " "

1617 - 85 " "

1618 - 90 " "

1619 - 91 " "

1620 - 2 PLEASANT ST

1621 - 6 " "

1622 - 12-14 " "

1623 - 22 " "

1624 - 32 " "

1625 - 35 " "

1626 - 42 PLEASANT ST

1627 - 45 " "

1628 - 53 " "

1629 - 54 " "

1630 - 63 " "

1631 - 64 " "

1632 - 69 " "

1633 - 75 " "

1634 - 22 WEST ST

1635 - 51 " "

1636 - 54 " "

1637 - 61 " "

1638 - 20 PRAIRIE ST

1639 - 29 " "

1640 - 34 " "

1641 - 44 " "

1642 - 52 " "

1643 - 53 " "

1644- 64 PRAIRIE ST

1645- 67 " "

1646- 76 " " (ALSO DI)

1647- 79 " " (ALSO DI)

1648- 86 " " (ALSO DI)

1649- 87 " " (ALSO DI)

1650- 95 " " (ALSO DI)

1651- 96 " " (ALSO DI)

1652- 102 " "

1653- 105 " "

1654- 19 FRANCES ST

1655- 45 " "

1656- 53 " "

1657- 54 " "

1658- 61 " "

1659- 64 " "

1660- 69 " "

1661- 48 CHASE RD

1662- 60 CHASE RD

1663- 6 SHIRLEY ST

1664- 9 " "

1665- 10 " "

1666- 17 " "

1667- 23 " "

1668- 29 " "

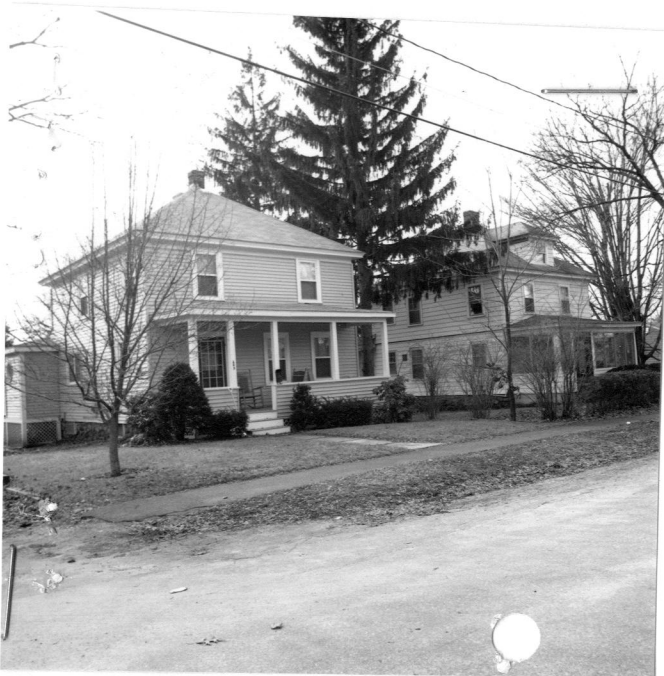
1669- 35-37 " "



149 Central Street (CON. 1566)



11-27 Dorsey Street



245, 251 Central Street (CON. 1584, CON. 1586)